



City of Albuquerque

Department of Municipal Development



Timothy M. Keller, Mayor

Jennifer Turner, Director

Greater Albuquerque Active Transportation Committee (GAATC) Meeting Minutes

Monday, March 10, 2025 | 4:00 – 6:00 PM

- **Call to order**
 - The Greater Albuquerque Active Transportation Committee Meeting of March 10, 2025, was called to order by Luciana Roça at 4:03pm.
- **Introductions**
 - **Committee Members Present**
 - Luciana Roça (Vice Chair)
 - Adrian Carver
 - Dr. Naomi George
 - Frank Horine
 - Ryan Mast
 - **Committee Members Absent**
 - Alex Applegate (Chair)
 - **Staff Members Present**
 - Amy Sexton (CABQ Planning)
 - Tara Cok (MRCOG)
 - Albert Lee (CABQ Sustainability)
 - Julie Luna (BernCo)
 - Richard Meadows (BernCo)
 - Paul Olson (CABQ DMD)
 - Francine Pacheco (Wilson & Company)
 - Whitney Phelan (CABQ Parks & Recreation)
 - Jenae Robertson (TYLin)
 - Debbie Wolfe (BernCo)
 - **Visitors Present**
 - Dianne Cress, Bike ABQ
 - Theresa Dunn, President of Bike ABQ
 - Ben Garland, UNM Center for Pedestrian and Bicyclists Safety
 - Peter Rice, Downtown Albuquerque News



City of Albuquerque

Department of Municipal Development



Timothy M. Keller, Mayor

Jennifer Turner, Director

- **Review and Approval of March 10, 2025 Meeting Agenda**
 - Vice Chair Roça then asked for a motion to approve the agenda. Member Mast moved to approve the agenda. Member George seconded. Motion approved 5-0
Yes: Ryan Mast, Dr. Naomi George, Luciana Roça, Adrian Carver, Frank Horine
No: None
- **Review and Approval of February 10, 2025 Meeting Minutes**
 - Vice Chair Roça then asked for a motion to approve the agenda. Member Mast moved to approve the agenda. Member George seconded. Motion approved 5-0
Yes: Ryan Mast, Dr. Naomi George, Luciana Roça, Adrian Carver, Frank Horine
No: None
- **Public Comments**
 - No emailed comments
 - No public comments
- **Discussion / Action Items**
 - None
- **Presentations**
 - Final Draft of the Pedestrian and Bicyclist Safety Action Plan Update, Bernalillo County Technical Planning Manager, Richard Meadows
 - Purpose of presentation: Introduce draft of plan for County roads, demographics, data, survey results, and prioritized recommendations (ex: bike lanes, infrastructures, consistent sidewalks extended)
 - Conclusion: Bicyclists and pedestrians tend to get injured on the road due to distracted drivers and not enough sidewalks/safety barriers offered or inconsistent sidewalks. Priority locations are mainly in the southwest area of Albuquerque.
 - Next Steps: The draft plan will be submitted to the Planning Commission in May/June timeframe. Anticipating on having the plan adopted by summer while working around constraints.
 - Contacts for comment submittals listed below:
 1. **Julie Luna**, Technical Planner, Bernalillo County
Phone: (505) 377-7136
Email: Jaluna@bernco.gov
 2. **Francine Pacheco**, Project Manager, Wilson and Company
Phone: (505) 396-6074
Email: Francine.pacheco@wilsonco.com



City of Albuquerque

Department of Municipal Development



Timothy M. Keller, Mayor

Jennifer Turner, Director

- **Staff Reports**

- Municipal Development (DMD)
 - Transportation Planning, Paul Olson
 - [Tentative] Open House for Buena Vista Bike Boulevard Project
 - Location: Heights Community Center
 - Date and Time: April 10, 2025 at 5:00pm to 7:00pm
- Council Services
 - No Updates
- Parks and Recreation, Whitney Phelan
 - Speed limit and “No e-Bike” signage are to be posted around the City and prohibited trails in Open Space
- Planning
 - No Updates
- ABQ RIDE
 - No Updates
- Sustainability
 - No Updates
- Bernalillo County
 - No Updates
- MRCOG, Tara Cok (emailed update)
 - “MRMPO has been working on the regions Long-Range Transportation Plan, the Transitions 2045 Metropolitan Transportation Plan (MTP). The final draft is now available for public review until March 30th.”
 - Open house for MTP will be held:
 - Location: MRCOG Building in Downtown Albuquerque
 - Date and Time: Wednesday, March 12, 2025 at 11:30am to 1pm
 - Link with more information: <https://www.mrcog-nm.gov/264/Metropolitan-Transportation-Plan>
- NMDOT District 3
 - No Updates

- **Next Meeting:** April 14, 2025 4 – 6 pm
- **Adjourn**

BERNALILLO COUNTY

PEDESTRIAN & BICYCLE SAFETY ACTION PLAN

Monday, Mar. 10, 2025



PROJECT BACKGROUND

Bernalillo County Pedestrian and Bicycle Safety Action Plan (2012)

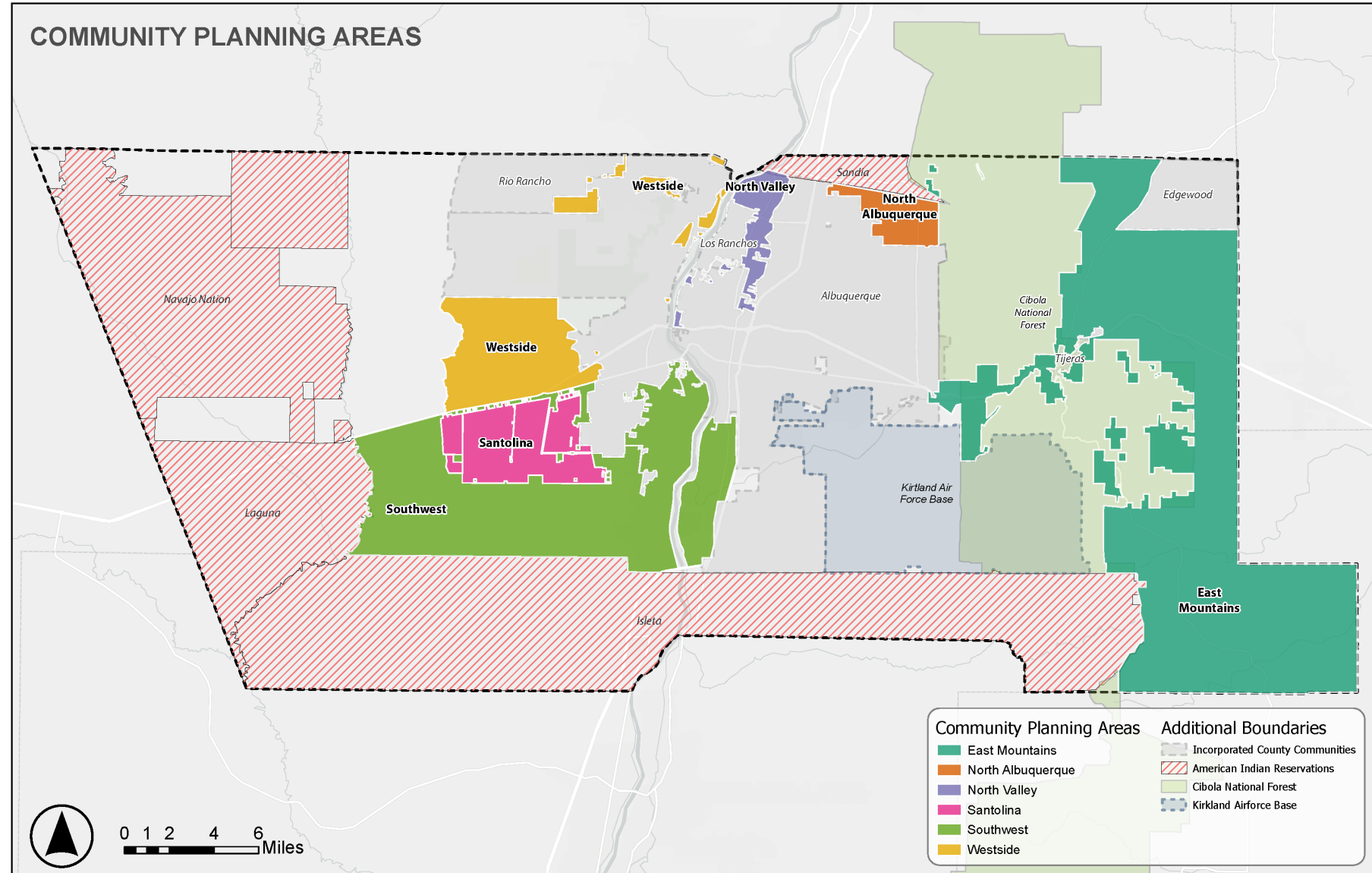
Previous plan components included:

1. **Safety** – identified safety issues and recommendations to improve safety
2. **Future bicycle and pedestrian amenities** – Identified locations for future sidewalks, trails, bike lanes, bike routes, etc.
3. **Action plan** – plan to address safety issues and develop amenities



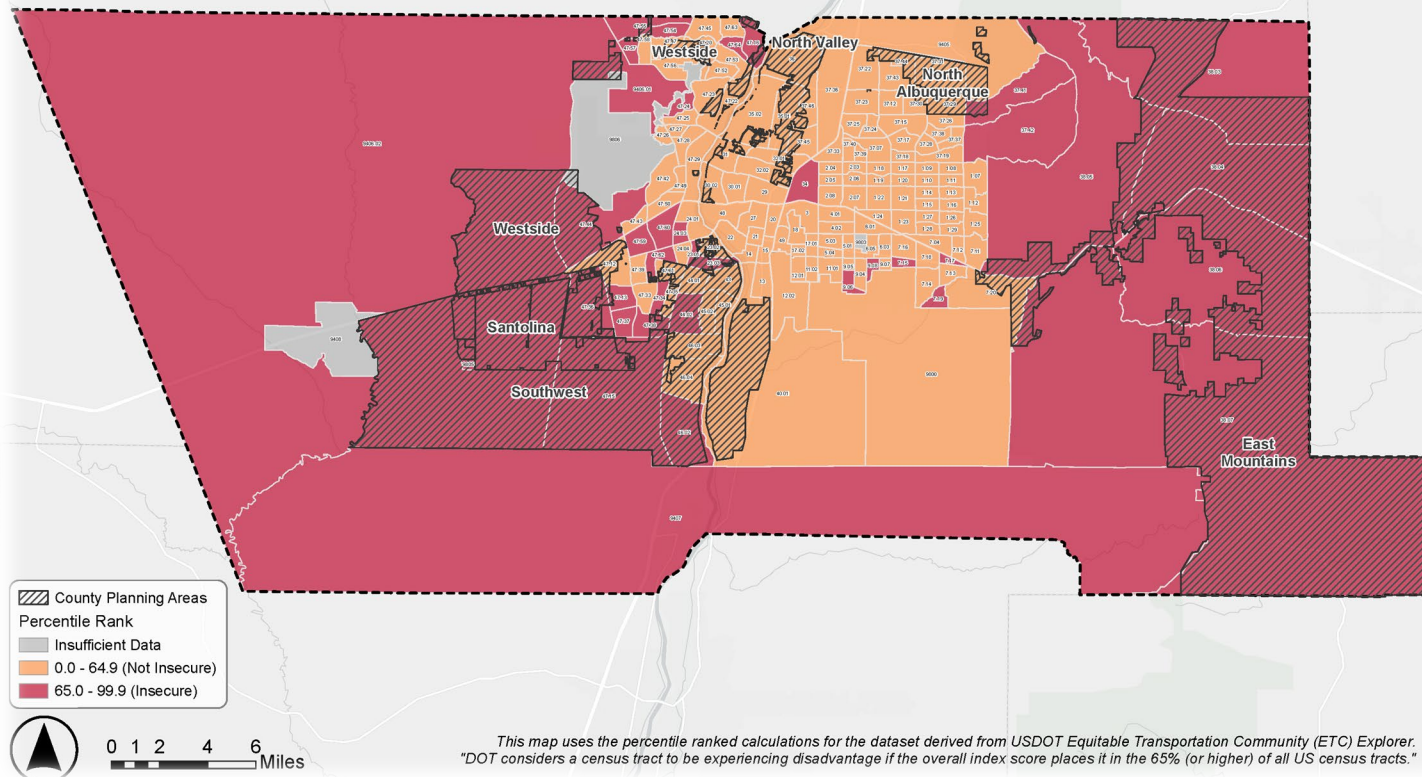
PROJECT BACKGROUND

- The study area consists of unincorporated County land, organized by the **Community Planning Areas (CPAs)**
- Focus on County-owned roadways
- Recommend infrastructure improvements and projects
- Additionally, this new plan will address project within the East Mountains and include an in-depth equity analysis.



EQUITY (TRANSPORTATION INSECURITY)

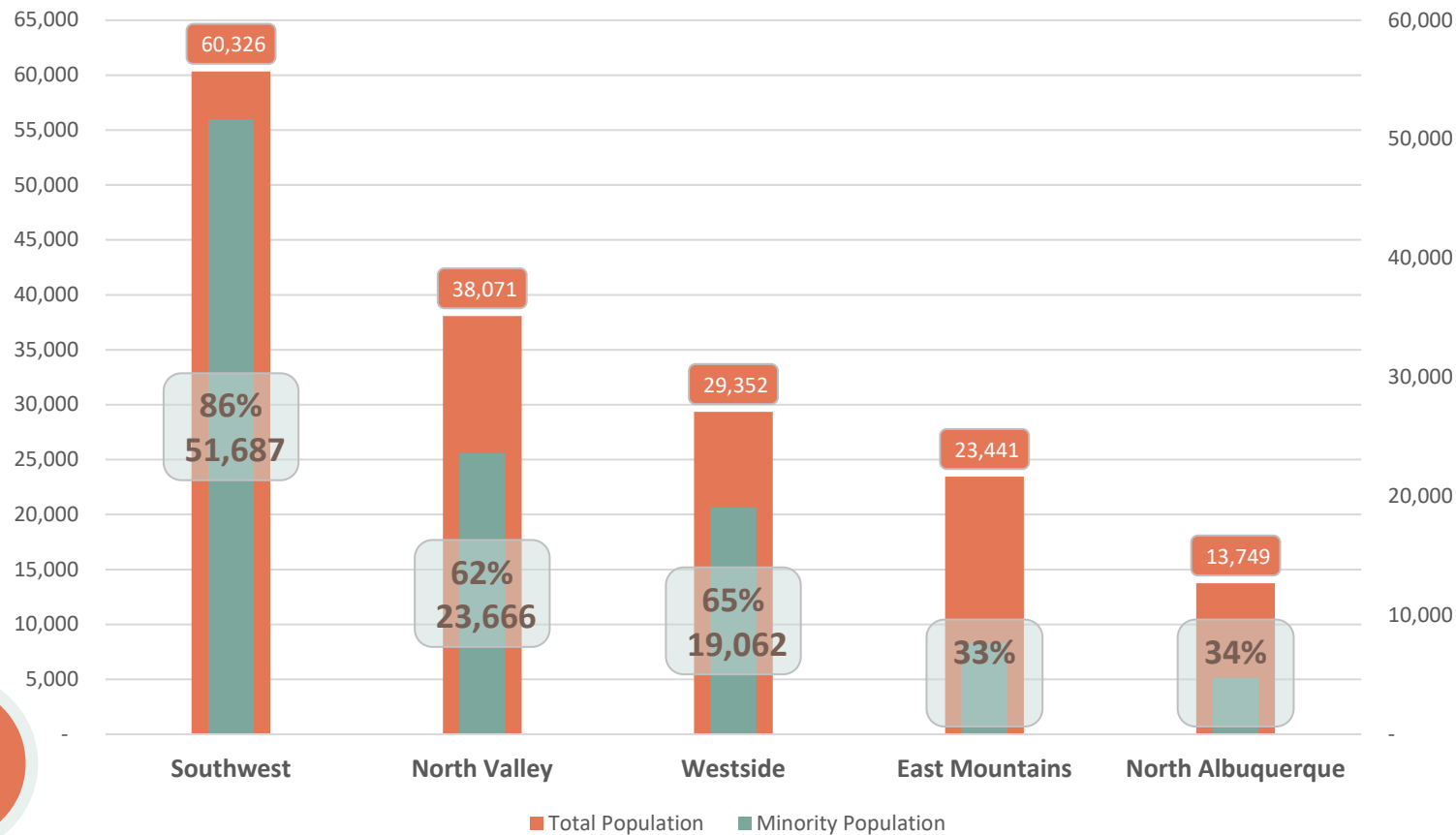
Transportation Insecurity - Bernalillo County 2020 Census Tracts
Percentile Ranked Tracts by Final Composite Score Used to Determine
Level of Transportation Security



- A majority of the CPAs are considered within Bernalillo County are ***Transportation Insecure***.
- The USDOT's Equitable Transportation Community (ETC) defines transportation insecurity as a key aspect of transportation disadvantage, occurring when individuals are **unable to access regular, reliable, and safe transportation** to meet the essential needs of their daily lives.

EQUITY (DEMOGRAPHICS)

Minority Population Compared to Total Population



A significant portion of the population in Southwest, North Valley, and Westside communities belong to racial and ethnic minority groups.

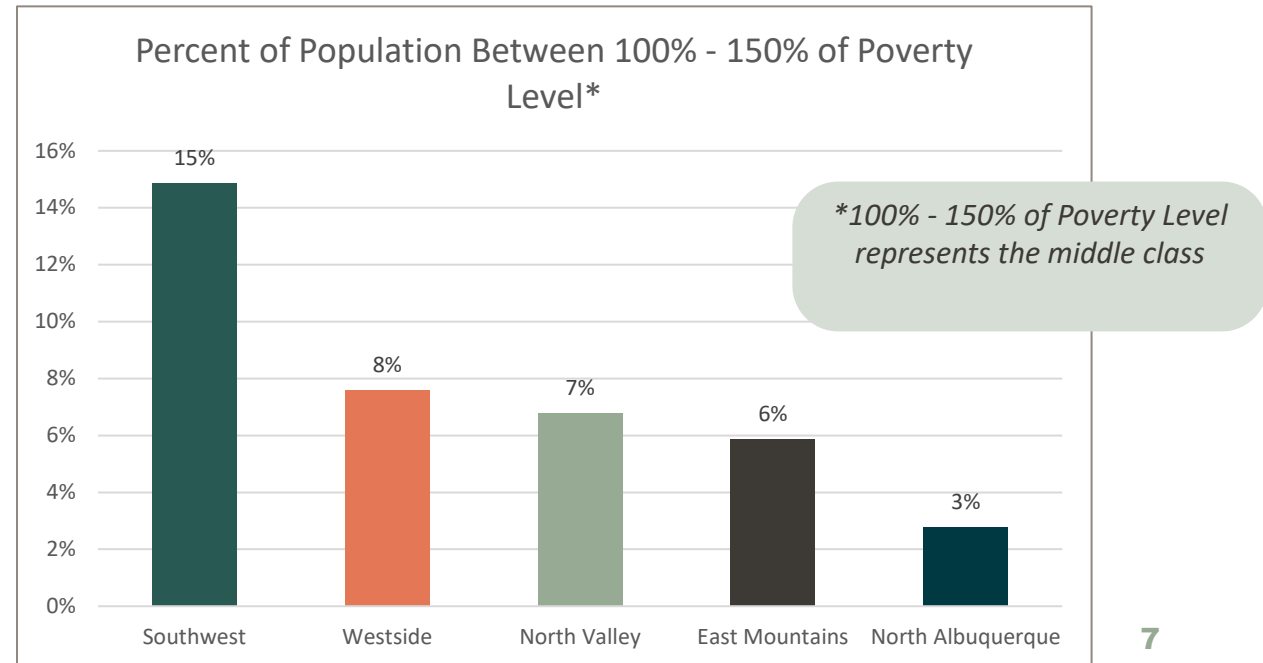
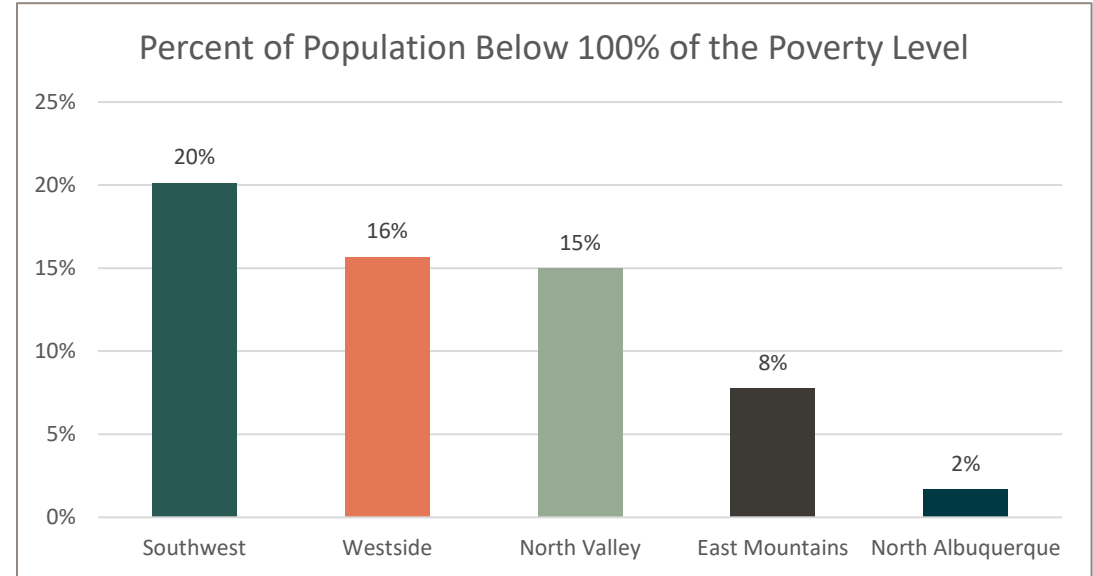
This highlights the urgent need for the county to prioritize these areas for safety improvements, ensuring that all residents, particularly those from historically underserved communities, have equitable access to safe and reliable transportation.

Vison Zero found that most of the increase in crashes are occuring in underserved and disadvantaged communties.

EQUITY (DEMOGRAPHICS)

A large percentage of residents in the Southwest and Westside live 15-20% below 100% of the poverty line, which underscores the critical need to prioritize these areas for safety improvements.

Addressing these disparities is essential to ensuring that all community members, particularly those facing economic challenges, have access to safe and equitable transportation options.



ANALYSIS

We conducted an in-depth review of bicycle and pedestrian facilities across Bernalillo County to identify key recommendations for future projects.

This analysis includes both detailed feedback from the community and measurable data on current usage and needs. Here, we present our list of different methods our team utilized:

Measurable Data

Existing Facilities Evaluation

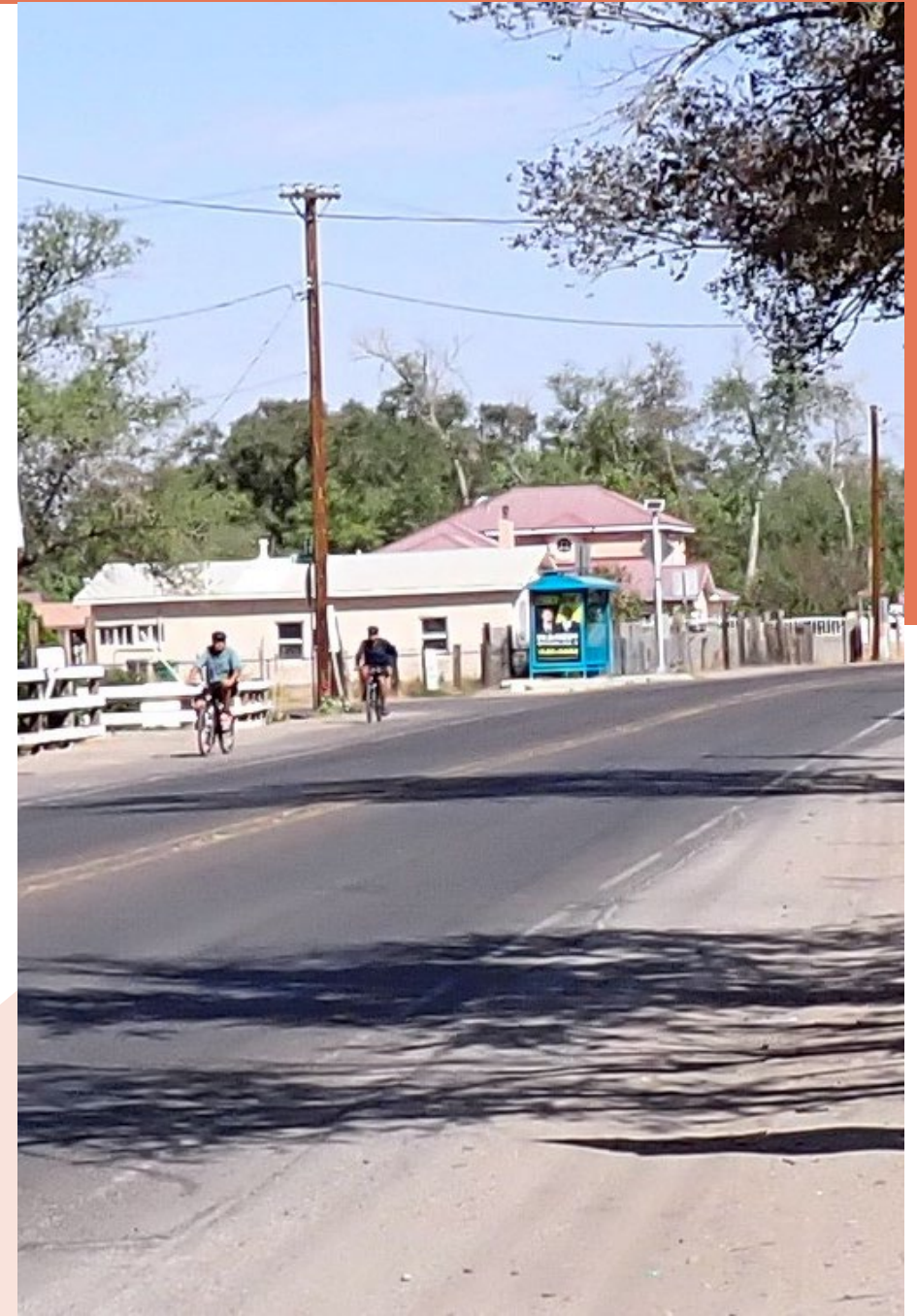
Assessing current infrastructure and identifying gaps.

Crash Analysis

Analyzing traffic incident data to identify high-risk locations.

Heat Map

Visualizing areas with the highest need for safety improvements based on data.



TOP CONTRIBUTING CRASH FACTORS

All Crashes		
Contributing Factor	Crashes	Percent of Total Crashes
Driver Behavior	4,028	41.82%
Driver Inattention	2,535	26.32%
Excessive Speed	1,031	10.70%
No Contributing Factor	615	6.38%
Unknown Contributing Factor	497	5.16%
Intoxication	409	4.25%
External Condition - Traffic	274	2.84%
Vehicle Defect	192	1.99%
Pedestrian Error	31	0.32%
External Condition – Infrastructure	13	0.13%
External Condition	7	0.07%

Pedestrian and Bicyclist-Involved Crashes		
Contributing Factor	Crashes	Percent of Total Crashes
Driver Inattention	43	23.37%
Intoxication	39	21.20%
Driver Behavior	36	19.57%
Pedestrian Error	28	15.22%
No Contributing Factor	23	12.50%
Unknown Contributing Factor	7	3.80%
Excessive Speed	4	2.17%
External Condition - Traffic	4	2.17%
Vehicle Defect	0	0%
External Condition – Infrastructure	0	0%
External Condition	0	0%

SURVEY RESULTS



Our team received a total of 106 survey responses.



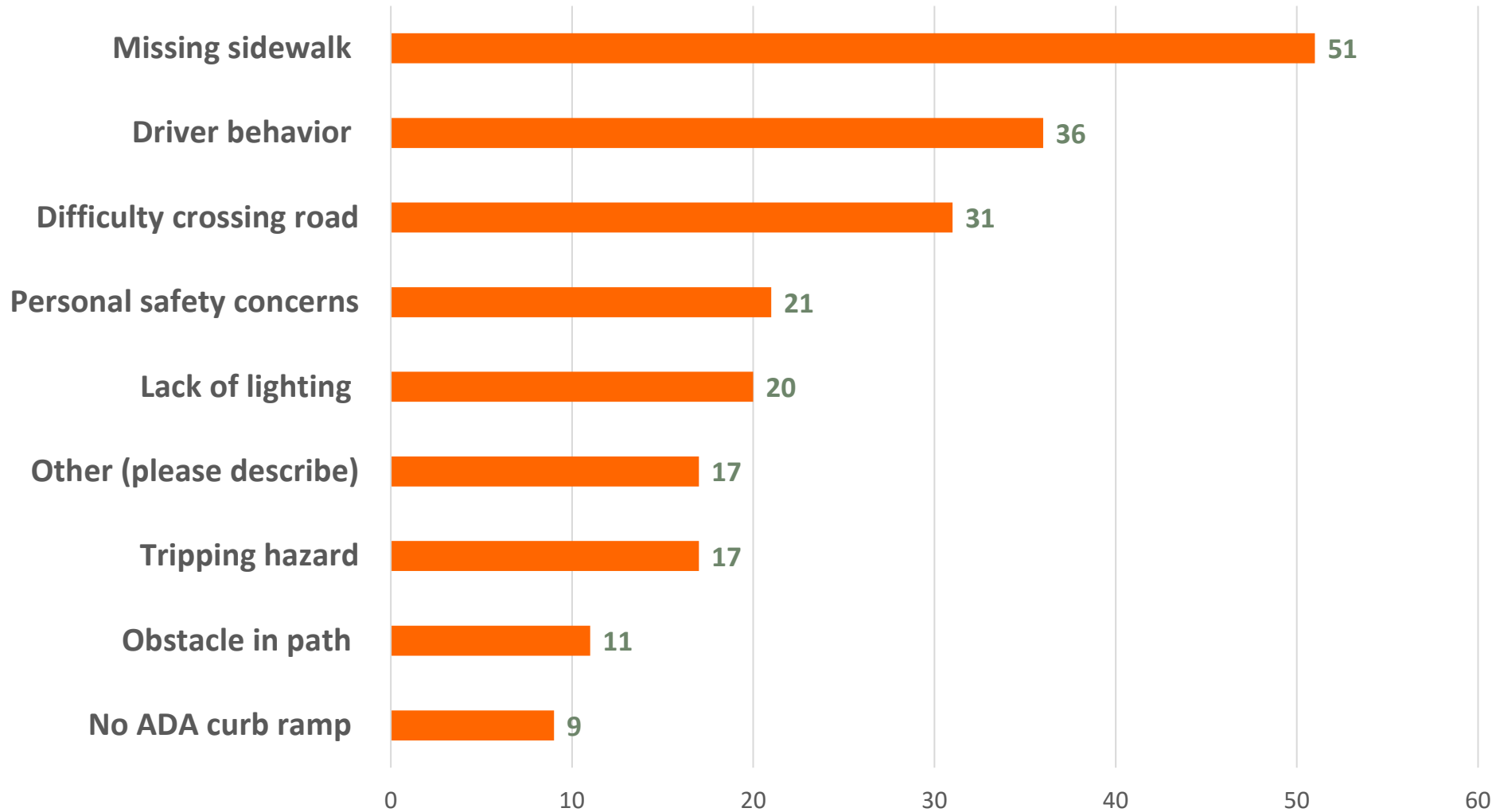
Bike/pedestrian infrastructure and safe accessibility were top factors for choosing a walking or biking route



Public places, livelihood amenities, and schools were the top three priority locations for sidewalk improvements

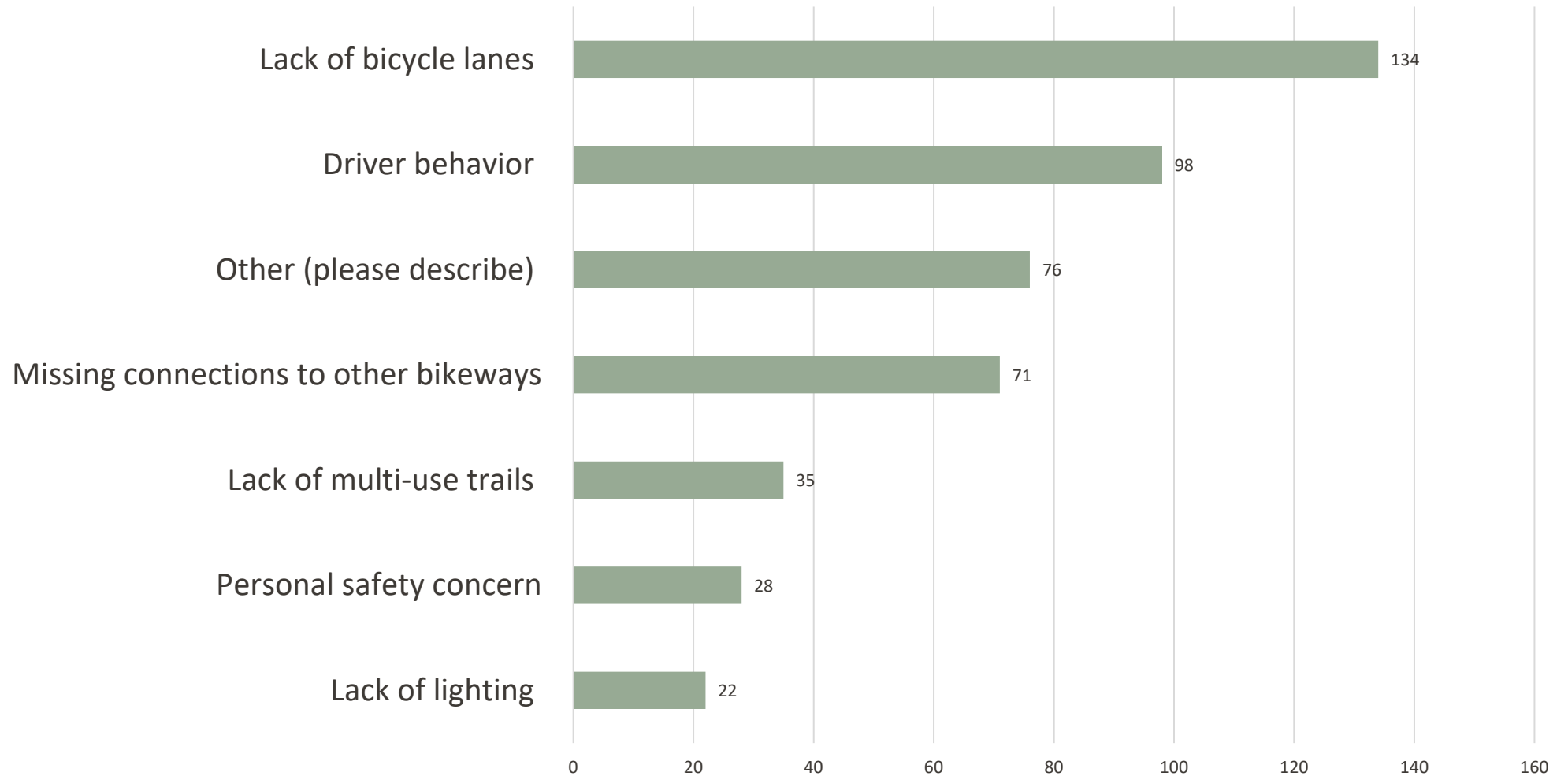
SURVEY RESULTS

Walking/ADA Barriers Reported



SURVEY RESULTS

Biking Barriers Reported



RECOMMENDATIONS

A set of locations and recommendations was formulated based on a combination of multiple data sets and factors:

1. ActiveTrans Priority Tool
2. Pedestrian and Bicyclist Crash Density
3. Existing and Proposed Projects
4. Status of Disadvantage

RECOMMENDATIONS

ID	Priority	CPA	Road	Endpoints	Recommendation	Length (ft)
1001	1	SW	Coors Rd	Bridge Blvd to Arenal Rd	Sidewalk (tie existing between Arenal and Old Coors; Tower Rd to Bridge Blvd)	528 (x2)
1002	1	SW	Rio Bravo Blvd	Broadway to Rio Grande	Buffered Bike Lane with clear markings and signage, tie into multi-use path at Dean Dr SW	Bike Lane: 7,392 (x2) Bike Signage & Paint: 14,256 (x2)
1003	1	SW	Rio Bravo Blvd	Rio Grande to Del Rio Rd	Install Sidewalk in accordance with bus route accesses	9,504
1004	1	SW	Sage Rd	Old Coors Rd to San Ygnacio Rd	Recommend facility placement: Widen shoulder, sidewalk (drainage study needed), and/or other facility	2,852 (x2)
1005	1	SW	Prince St	Prosperity Ave to Camino Del Tren Ave	Install Sidewalk along bus route and leading to train station; Widen Shoulder for bike traffic	4,224
1006	1	SW	Goff Blvd	5 Points Rd to Tapia Blvd	Sidewalk with signage and striping at crossings; Sidewalk to tie into existing	Sidewalk: 4,569
1007	1	SW	2nd St	Rio Bravo Blvd to Shirk Ln	Install sidewalks along West side in connection with bus network; continue multi-use path OR other facility northward to train station.	8,976' Sidewalk 1,100' Multi-Use Path
2001	1	SW	Gun Club Rd	Isleta Blvd to Coors Blvd	Install sidewalk and bikelanes	

RECOMMENDATIONS

ID	Priority	CPA	Road	Endpoints	Recommendation	Length (ft)
1008	2	NV	2nd St	El Pueblo to Hacienda Rd	Sidewalk to tie into existing infrastructure	528
1010	2	SW	Barcelona Rd	Coors Blvd to Isleta Blvd	Continue Sidewalk and Bike Facilities (Coors to Isleta) Coors to 2830 Barcelona & 1904 to Isleta Blvd; highest priority near elementary school	10,560
1011	2	SW	Gatewood Ave	Bridge Blvd to Isleta Blvd	Sidewalk installation - priority for schools; tie into existing	4,224 (x2)
1012	2	SW	Old Coors Rd	Bridge Blvd to Coors Blvd	Sidewalk and Paved Shoulder (Bridge Blvd to Coors Blvd)	3,696 (x2)
1013	2	NV	Edith Blvd	Amara Vista Ct to Tyler Rd	Sidewalk and bikeway installment along roadway	20,064
1014	2	SW	Atrisco Dr (South)	Bridge Blvd to Arenal Rd	Widen Shoulders for peds and bikes; establish clear signage for ped/bike facilities where present	5,808 (x2)
1015	2	SW/W	Central Ave	98 th St to Atrisco Vista Blvd	Install multi-use path or large, paved shoulder to provide connection in the community	13,728

RECOMMENDATIONS

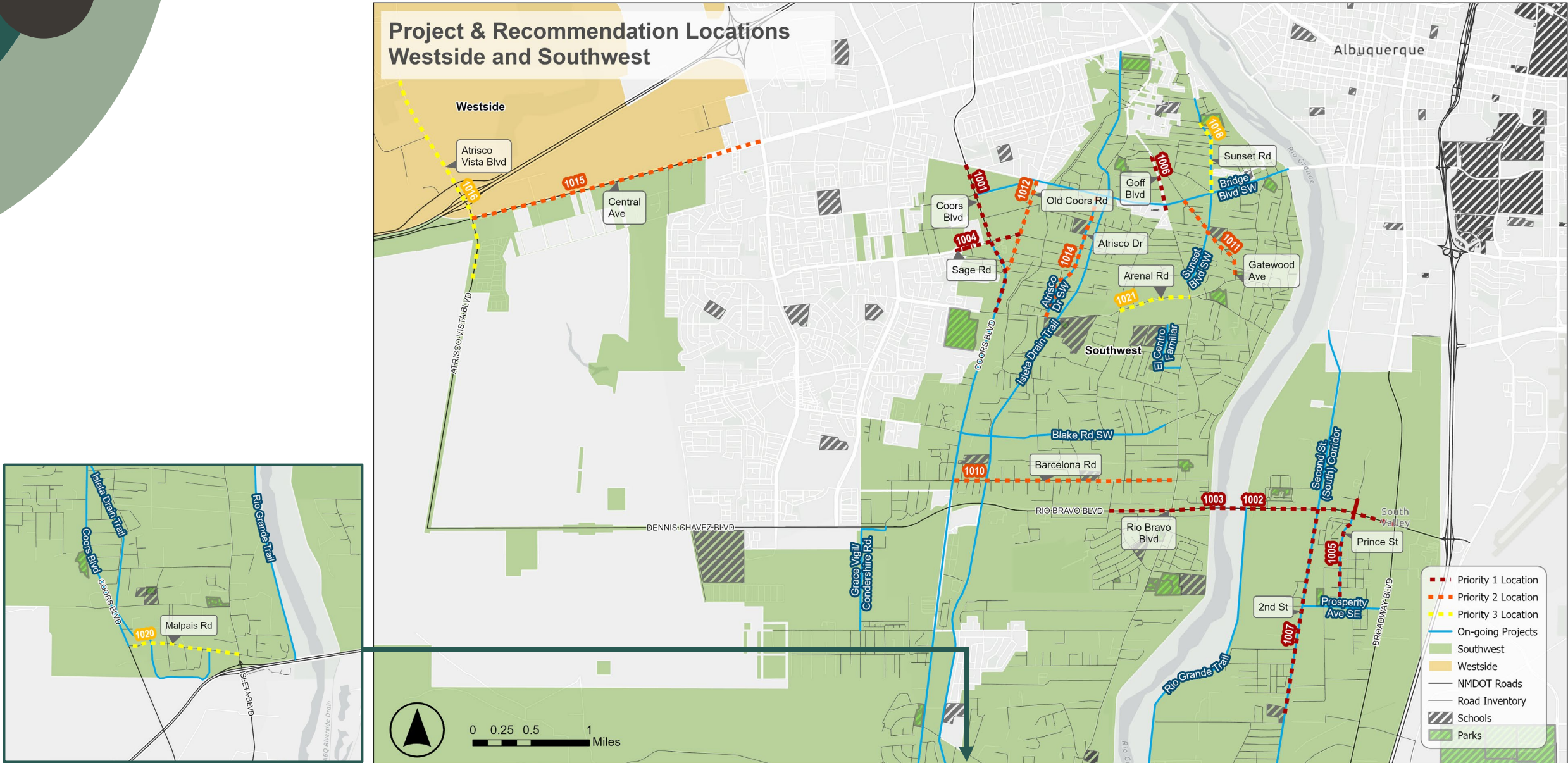
ID	Priority	CPA	Road	Endpoints	Recommendation	Length (ft)
1016	3	SW/W	Atrisco Vista Blvd	Tierra West Estates to Prime Ave	Widen Shoulders for peds and bikes; establish clear signage for ped/bike facilities where present	3,696 (x2)
1017	3	EM	NM 333	Public School Rd to Bernalillo County Line	Provide Wide shoulders for bike facility and pedestrian passage; tie into NM-14	53,328
1018	3	SW	Sunset Rd	Bridge Blvd to Sunset Gardens Rd	Sidewalk to tie into existing infrastructure	2,640 (x2)
1020	3	SW	Malpais Rd	Coors Blvd to Isleta Blvd	Consider sidepath (asphalt sidewalk); tie into proposed facilities intersecting roadway	5,280
1021	3	SW	Arenal Rd	Goff Blvd/Isleta Blvd to Tapia Blvd	Sidewalk to tie into existing infrastructure	2,640 (x2)
2002	3	NW	Alameda Rd	4 th Street to the Diversion Channel	Multi use trail	

ADDITIONAL EAST MOUNTAINS RECOMMENDATIONS

ID	Priority	CPA	Road	Endpoints	Recommendation	Length (ft)
1022	4	EM	NM 333	I-40 Carnuel exit to NM 14	(Rio Grande Trail Spur) Bike Lanes	7,136
1023	4	EM	NM 14	Frost Rd to La Madera Rd	Trail Extension	13,055
1024	4	EM	NM 337	NM 333 to Forest Rd 423	Bike Lanes and Sidewalks	9,475
1025	4	EM	Public School Rd	NM 333 to NM 337	Sidewalks	3,740
1026	4	EM	NM 333	Public School Rd to NM 14	Sidewalks	6,709
1027	4	EM	NM 333	NM 14 to NM 217	Bike Lanes	9,387

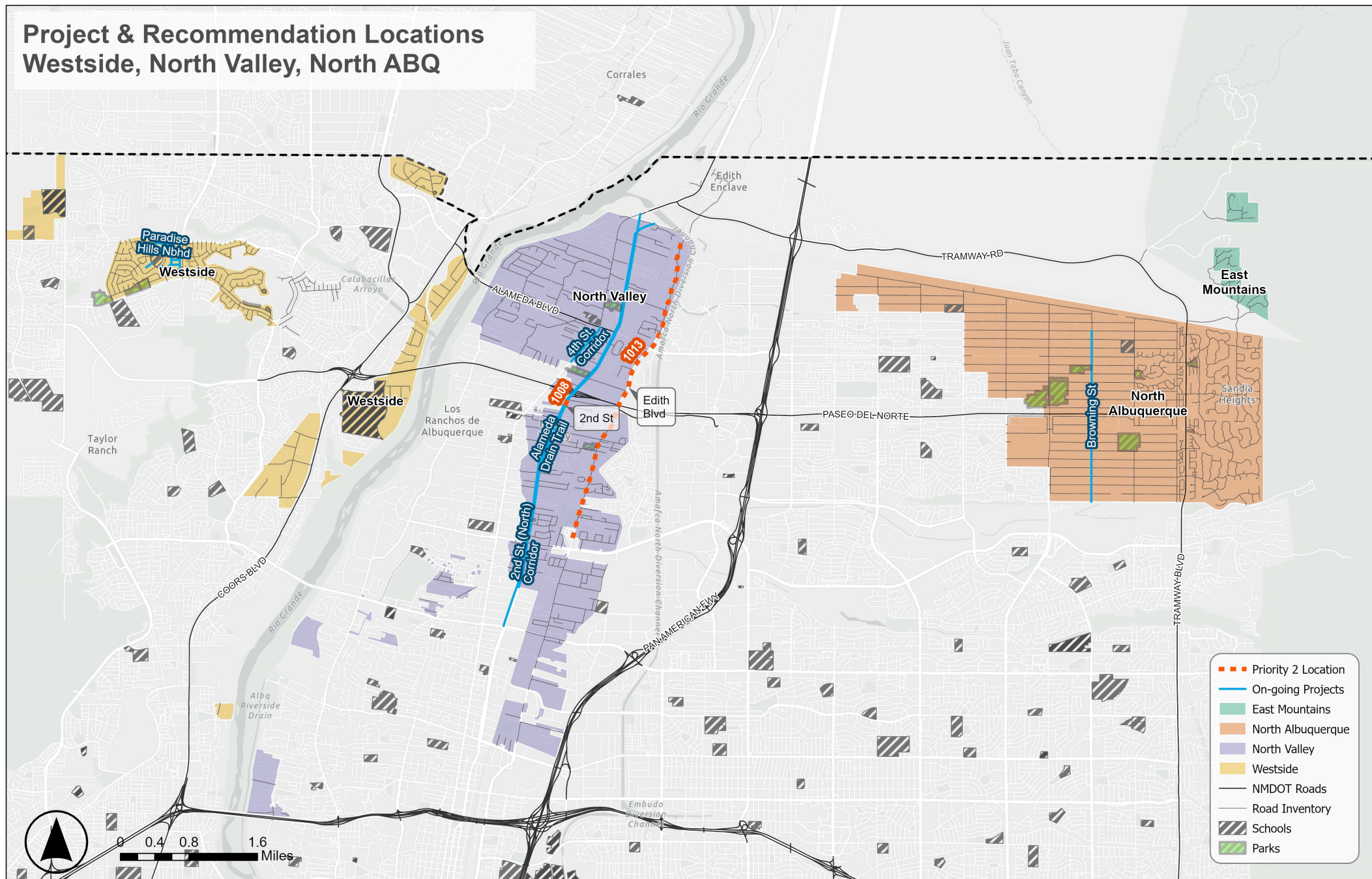
RECOMMENDATIONS

Project & Recommendation Locations Westside and Southwest

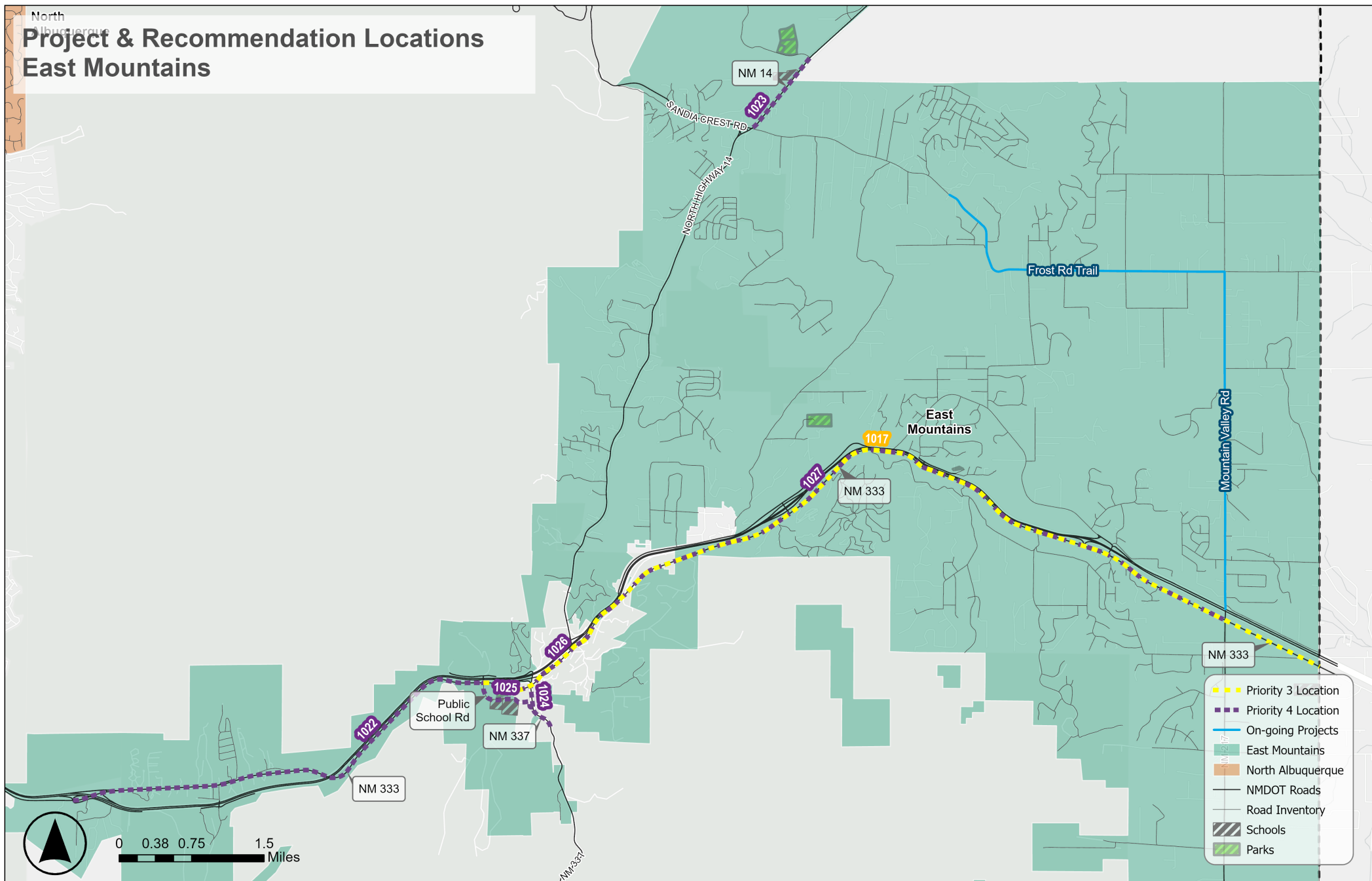


RECOMMENDATIONS

Project & Recommendation Locations Westside, North Valley, North ABQ



RECOMMENDATIONS



HOW TO SUBMIT A COMMENT



Bernalillo County

Julie Luna

Technical Planner

Call: (505) 377-7136

Email: jaluna@bernco.gov



Wilson & Company

Francine Pacheco

Project Manager

Call: (505) 396-6074

Email: francine.pacheco@wilsonco.com

**PUBLIC COMMENT
WILL BE OPEN
THRU
DEC. 31, 2024**